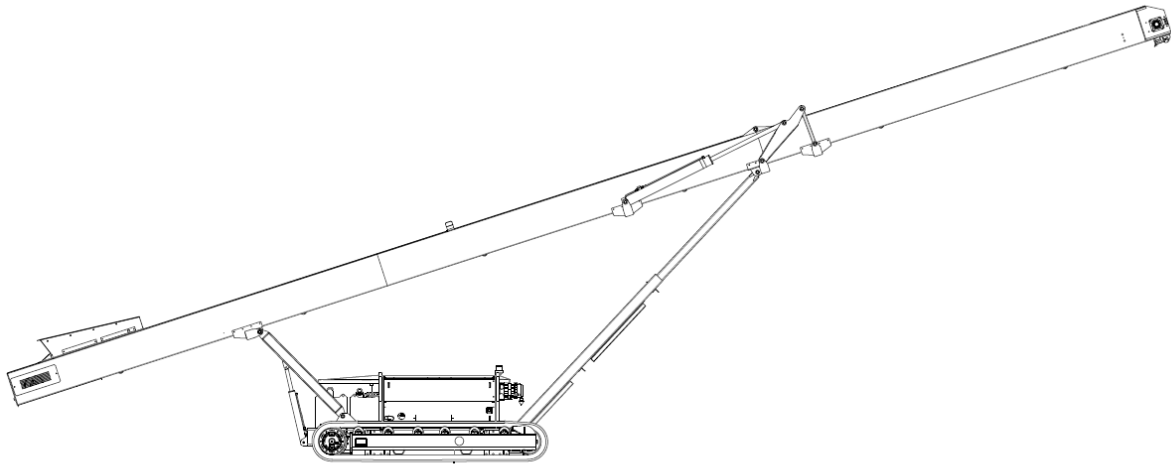


TECHNICAL SPECIFICATION

Origin C2000T – TRACKED CONVEYOR



ORIGIN C2000T – TRACKED CONVEYOR



Introducing the ORIGIN range from Telestack – an entry level range of products that embodies the original Telestack ethos –reliable design and good workmanship - but without the extras. Although more basic in design, the Origin range maintains the ability to achieve impressive stockpiling ability and is ideal working after a screen in crushed aggregate, sand, or top soil application.

The ORIGIN C2000T is a track mounted fully mobile stockpiling conveyor. Powered by a diesel engine it is self-contained and offers an excellent stockpiling capacity. As mobile crushers and screens constantly get larger with increased throughputs, transport restrictions have not allowed for their on board conveyors to increase in size and length to cope with higher tonnages. Track conveyors fulfil this need by providing much larger stockpile capacity and at the same time improve plant mobility by removing material from the processing equipment.

C2000T – TYPICAL APPLICATIONS

- Stockpiling from secondary crushers, screens and shredders.
- Stockpiling crushed stone, sand and gravel, mineral ores, mulch, woodchip/biomass.
- Stockpiling construction and demolition waste, top soil, coal, grain etc.
- Receiving crushed material and stockpiling safely over a quarry face/bench.
- Working as part of a mobile system on short to medium term projects.
- Ship and truck loading.

C2000T – KEY FEATURES

- High throughput with typical tonnages up to 300 tph (330 Ton per hour)
- Maximum distance between tracks and head drum, for optimum stockpiling capacity
- Maximum lump feed size of up to 75mm (3")
- Front and rear adjustable telescopic to obtain desired discharge or feed in height
- Engine protection shutdown system
- Counter weight built into feed boot area to give integral strength and stability in working position.
- Folding head section for ease of transport
- Paint specification, Cream: RAL 7032, Red: RAL 3001
- Options available

C2000T – KEY ADVANTAGES

- Removes the need for a dedicated wheel loader to constantly remove material from the crusher, screen or shredder.
- Reduces fuel cost by up to 75%
- Reduces operating cost by up to 70%
- Removing / reducing loading shovel movements reducing operating cost.
- Reduces screener idle time increasing production.
- Reduces face excavator idle time increasing production.
- Production rates of up to 300 tph (330 Ton per hour)
- Hydraulic folding head section allowing for compact road transportation.
- Typical set up time of under 10minutes.
- Hydraulic tail section height adjustment whilst at the same time maintaining head drum height ensuring maximum stockpile capacity.
- High specification machine designed for ease of maintenance commanding an excellent resale value at project conclusion.

C2000T – STOCKPLING CAPACITIES

All stockpiling capacities are calculated based on material, with a bulk density of 1.6 tonnes per m³ (100 lb/ft³)
Stockpile angle of repose 37°

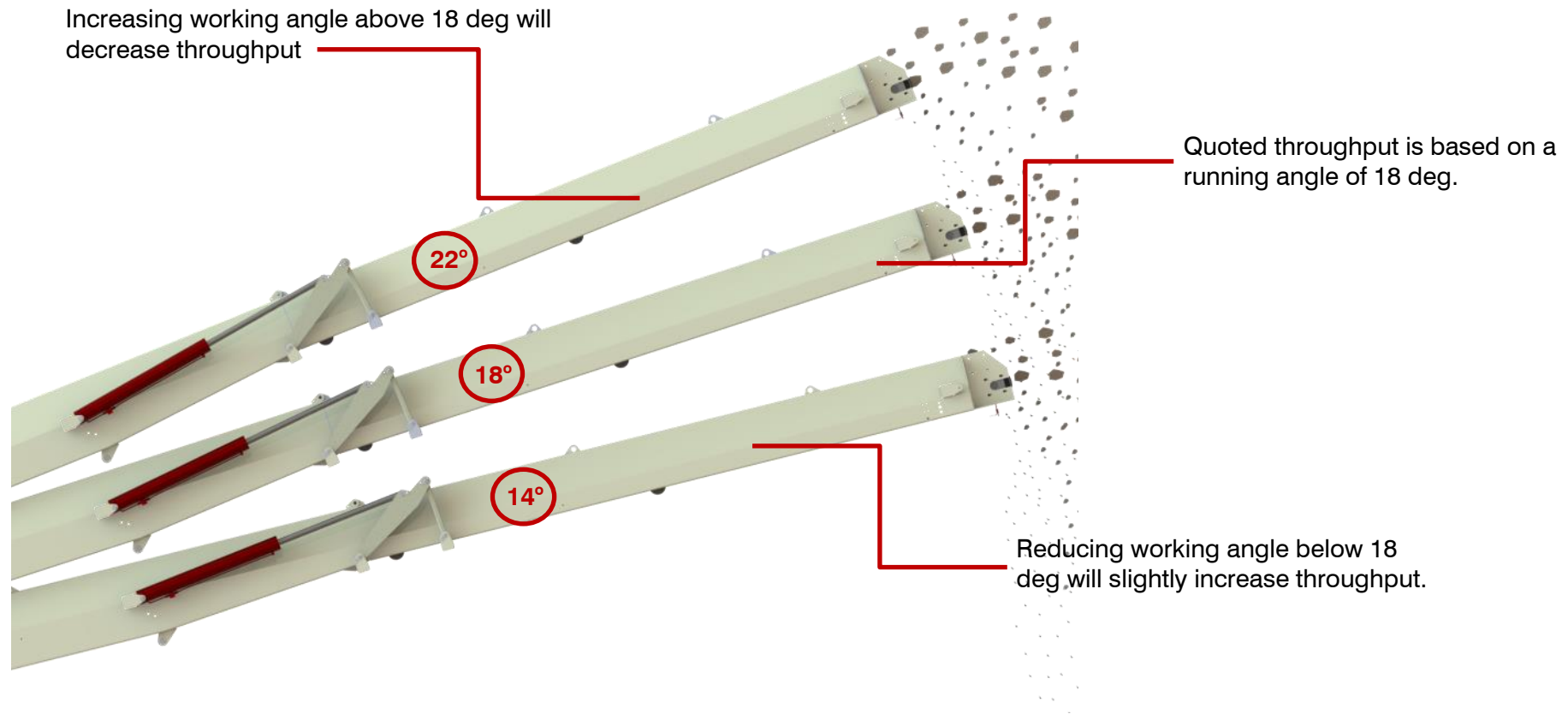
Conical Stockpile Capacities

Angle of Conveyor Belt (Degrees)	Stockpile Height		Stockpile Capacity (Volume)		Stockpile Capacity (Mass)	
	(m)	(ft)	(m3)	(yd3)	(Tonnes)	(Ton)
22°	7.25	23' 7"	702	920	1,125	1,240
20°	6.76	22'	560	745	912	1005
18°	6.28	20' 5"	458	600	730	805
16°	5.78	18' 10"	356	465	570	630
14°	5.28	17' 2"	272	355	435	480
12°	4.78	15' 6"	202	265	325	360

Note: All quoted tonnages and capacities are based at a recommended operation angle of 18°, with the higher degrees of inclination only adequate for materials with a lower bulk density.

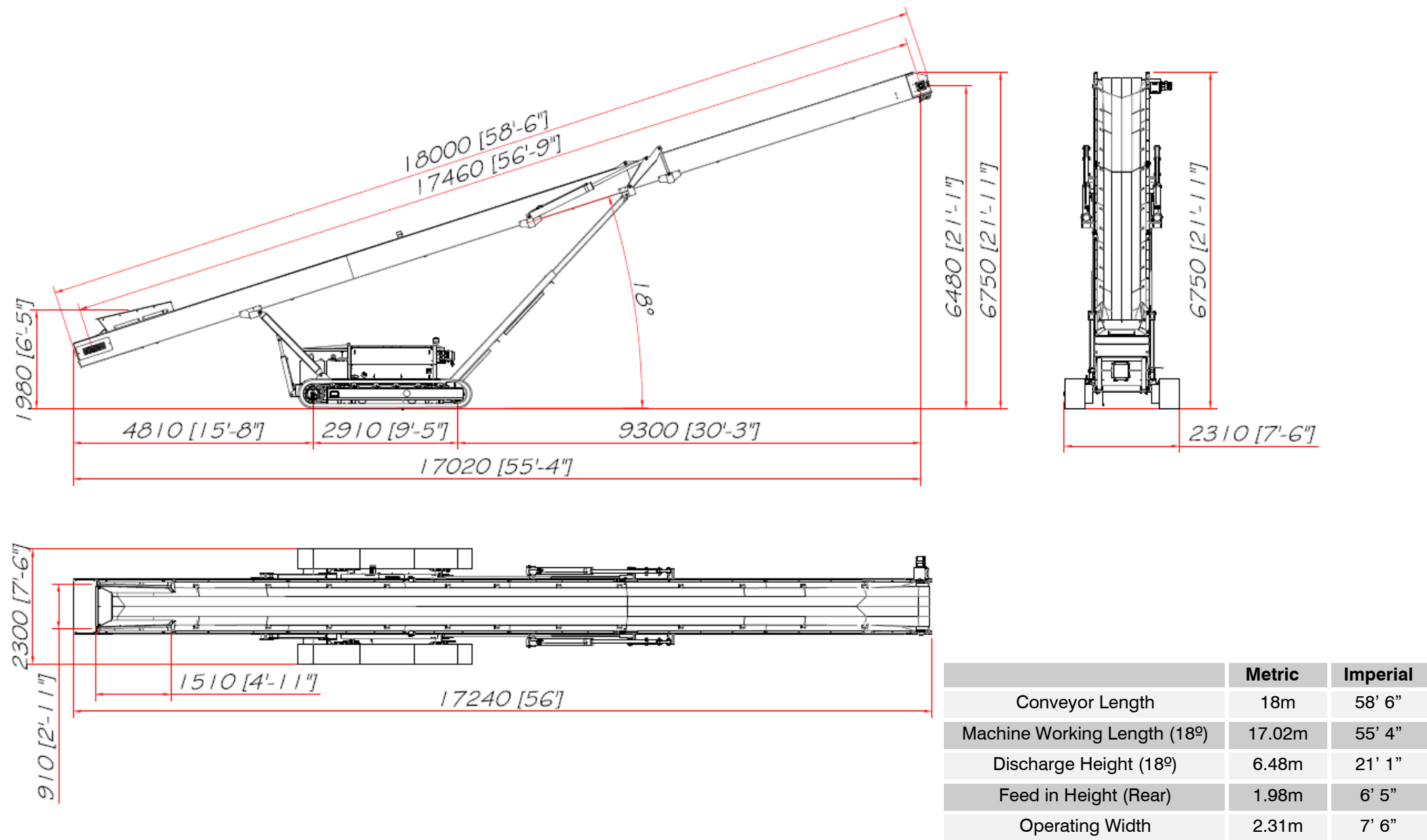
THROUGHPUT - EXPLAINED

Telestack throughputs are primarily based on a typical running angle of 18° . Depending on selected angle of operation throughput will vary.



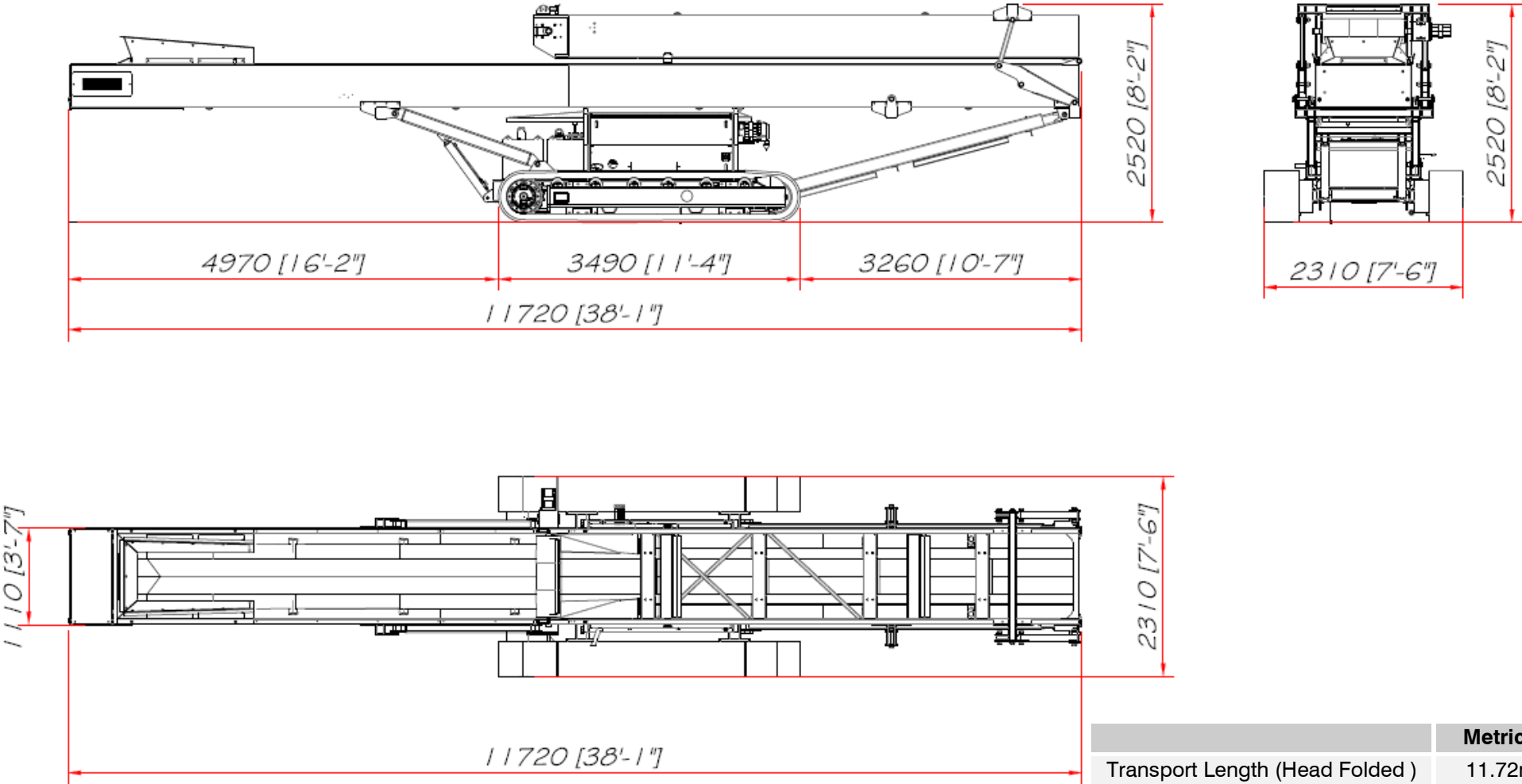
Feed method, material characteristics and environmental conditions can affect throughput, overall performance and maximum working angle.

ORIGIN C2000T – WORKING DIMENSIONS



THE POWER TO MOVE MATERIALS

ORIGIN C2000T – TRANSPORT DIMENSIONS



	Metric	Imperial
Transport Length (Head Folded)	11.72m	38' 1"
Transport Width	2.31m	7' 6"
Transport Height (Head Folded)	2.52m	8' 2"
Overall Weight	7,800 Kg	17,197 lbs
Unit can also be transported in a 40' High cube container.		

C2000T – MACHINE FEATURES

Feedboot

- Tapered feed boot design, with large material target area
- Adjustable rear telescopic for variable feed in height.
- Width – 0.9m (3')
- Length – 1.5m (5')
- Steel - 4mm
- 102mm (4") troughing rollers, spaced closely together



Incline Conveyor

- Heavy duty folded mild steel plate design
- The folded plate design gives an optimum strength to weight ratio.
- Hydraulic folding head as standard
- Standard 800mm (32") wide EP 250 2 Ply, 3mm+1.5mm Belting,
- Belt Speed 2.3m/s- (452ft/min) empty.
- 102mm (4") diameter troughing rollers set.
- Wing roller angle adjustable.
- 102mm (4") plain return rollers. Includes profiled steel nip guard as standard plain
- High torque, direct drive orbital motor. single drive
- Conveyor raise lower by hydraulic lever.
- Head fold by hydraulic lever.



Chassis

- Heavy Duty FL4 Tracks
- Longitudinal centres: 3000mm (9' 9")
- Track shoe width: 400mm (16")
- Track Drive: Two integral hydraulic motors. Tensioning: Hydraulic adjuster, grease tension
- Tracking: Push button pendant type (dog lead)
Maximum Speed of tracks: 1.3kph (0.81 mph). Full Revs.
- Heavy duty structural steel chassis, with integrated webbed plate design for the rear telescopic mountings.
- Large, lockable canopy access doors for ease of operation and maintenance.



Hydraulics

- Tandem pump system
- Easy access for maintenance to all hydraulic components such as pumps, filters, tanks, valves etc
- Steel fabricated hydraulic tank complete with fill level gauge and lockable filler cap.
- Capacity: 180 litre (47 US gallons)
- Oil type: Grade 32
- All conveyor functions by hydraulic lever. Raise / Lower Head and tail, Start / stop belt, head fold / unfold.



Engine & Control

Standard/EU Stage V /USA Tier 4

- Deutz TD2.2 L3 Electronic 3 Cylinder, 36.9KW (50HP) @ 2200 RPM

EU Stage IIIB/USA Tier 4

- Deutz D2.9 L04i, 36.4kW (50Hp) @ 2200 Rpm

Unregulated Countries

- CAT Tier 3/Euro IIIA, 2.2, 37kW (50Hp) @ 2200 Rpm
- Deutz L03i, 3 cylinder, 2011, Air cooled, 28.8 kW (38 Hp) @ 2200 rpm

Telestack Universal Panel

- Start-up system with safety features (fully fused at the battery and fault display on IFM HMI).
- Engine monitoring and system control including tracking and start/stop conveyor
- Standard electrical PCB master module technology with led indication for faulty components
- Faults are displayed on IFM HMI.
- One place label using standard symbols.
- Full frequency certified CE, FCC, AU and Japanese remotes systems.
- Panel mounted in secure canopy with lockable doors.
- Pendant / Dog lead for tracking with 8m cable

Diesel Tank

- Steel fabricated fuel tank complete with fill level gauge and lockable filler cap.
- Capacity: 180 litres (47 US gallons)



ORIGIN C2000T – OPTIONAL EXTRAS

The C2000T is an entry level track conveyor so options on this model are limited. Basic design has been kept basic and uncomplicated so certain options available on other Telestack equipment is not available on this model. Please consult with Telestack if you have any queries.

Bolt in Feed boot Liners

- **Option 1:** Bolt in 6mm (1/4") steel wear liners.
- **Option 2:** Bolt in 6mm (1/4") hardened steel wear liners.

Feed boot extensions. (Bolt on)

- 380mm bolt on feed boot extensions. Increased target area to 1200mm x 1560mm

Conveyor Side Skirting

- Under belt skirting plates with low friction liner to reduce drag. Does not need adjusted or reset when the conveyor is folded.

Belting Upgrade

- 800mm (32") 3 ply EP400 x 4 + 1.5mm

Radio remote Control

- **Option 1 (Basic remote)** Radio remote control to Track, and Start Stop the belt. (Head fold, raise / lower head and tail not included). Note this option requires an upgraded panel and loom.
- **Option 2 (Extra function remote)** Radio remote control to Track, and Start Stop the belt. Raise / Lower head and tail (Head fold not included). Note this option requires an upgraded panel and loom, additional solenoids and upgraded hydraulic circuit.

Oil Cooler

- 1 x Hydraulic oil cooler suitable for hot climates / machines that are expected to track long distances. Note this option requires an upgraded panel and loom, additional solenoids and upgraded hydraulic circuit.

Rollers

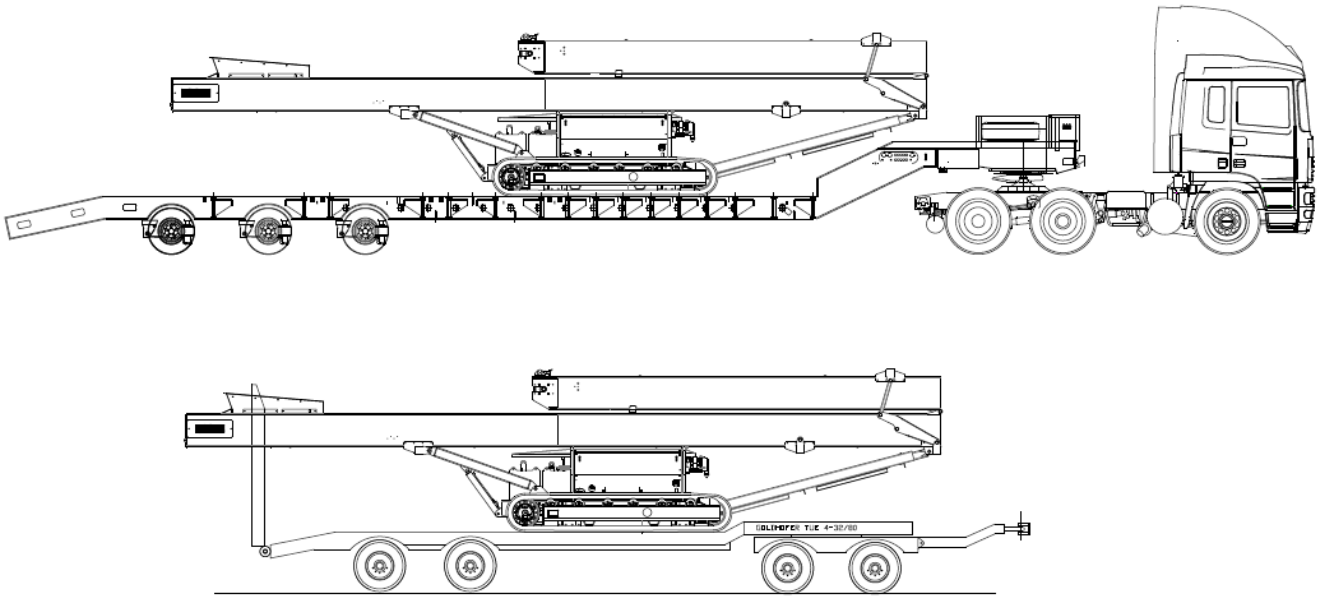
- 102mm (4") Rubber covered impact centre roller with wing rollers

ORIGIN C2000T – TRANSPORT INFORMATION

Options

The Origin C2000T can be transported in a number of ways:

1. Unit on 1 x low loader / Ro Ro (with head section folded over)
2. Unit in 1 x Euro Liner (with head section folded)
3. Unit in 1 x 40' High Cube Container (with head section folded)



Containerisation

1. The Conveyor is transported in a 40'ft High Cube Container (Inside Dimensions Length-12.m, Height-2.597m, Width-2.340m).
2. Conveyor must have Head Section folded over.

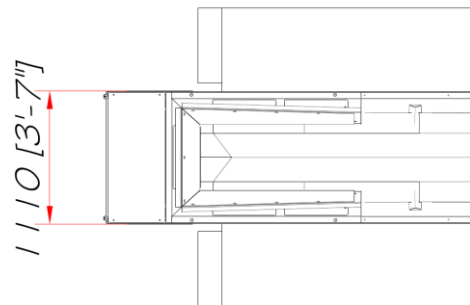
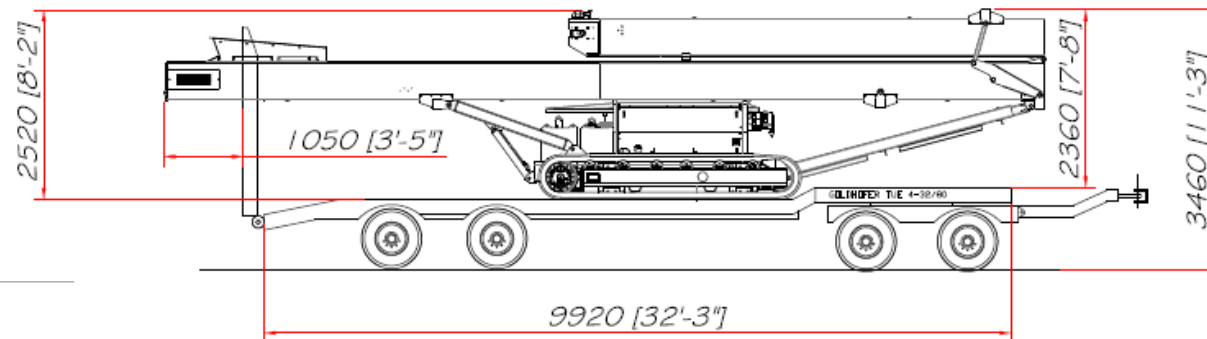
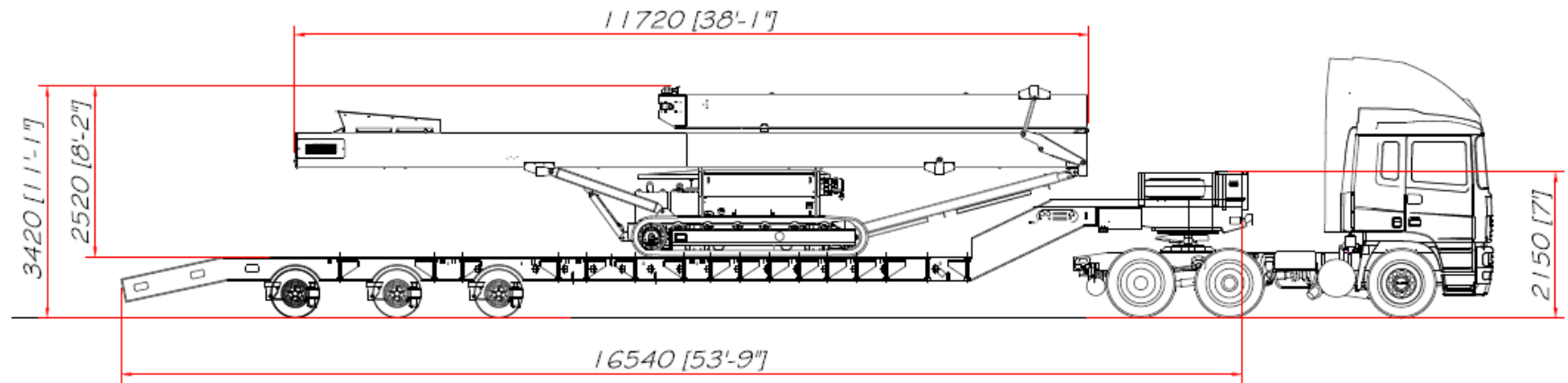
On arrival to destination the customer must do the following

1. Enter container and start machine after reading safety instructions.
2. Track the unit from the container with the engine on its lowest rev setting.
3. When unit is removed from the container, fold the head section using the hydraulic controls.
4. This model comes with the feed boot fitted. (If optional extensions fitted they will need to be bolted on)



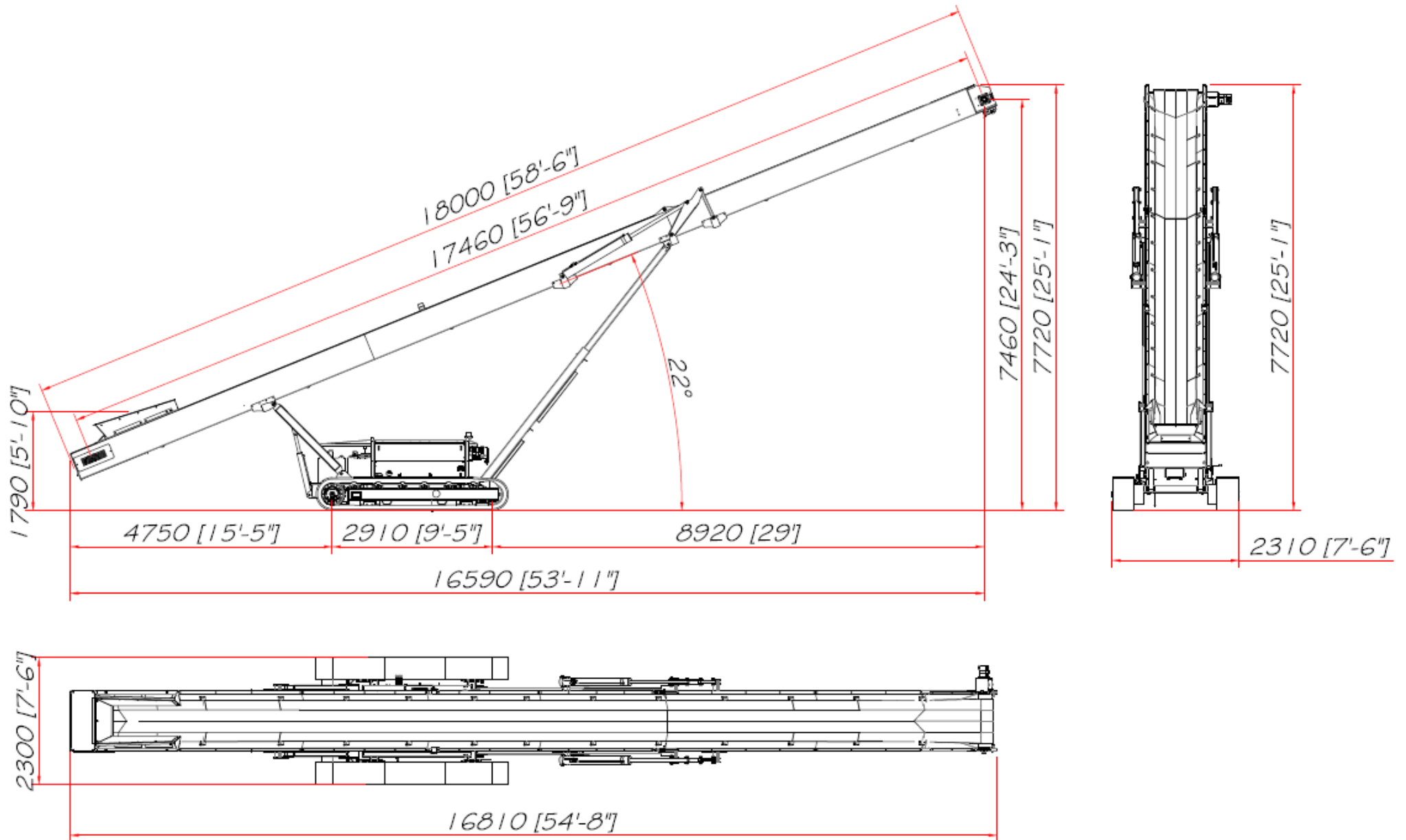
ORIGIN C2000T – GENERAL ARRANGEMENT

RoRo - TRANSPORT VIEWS



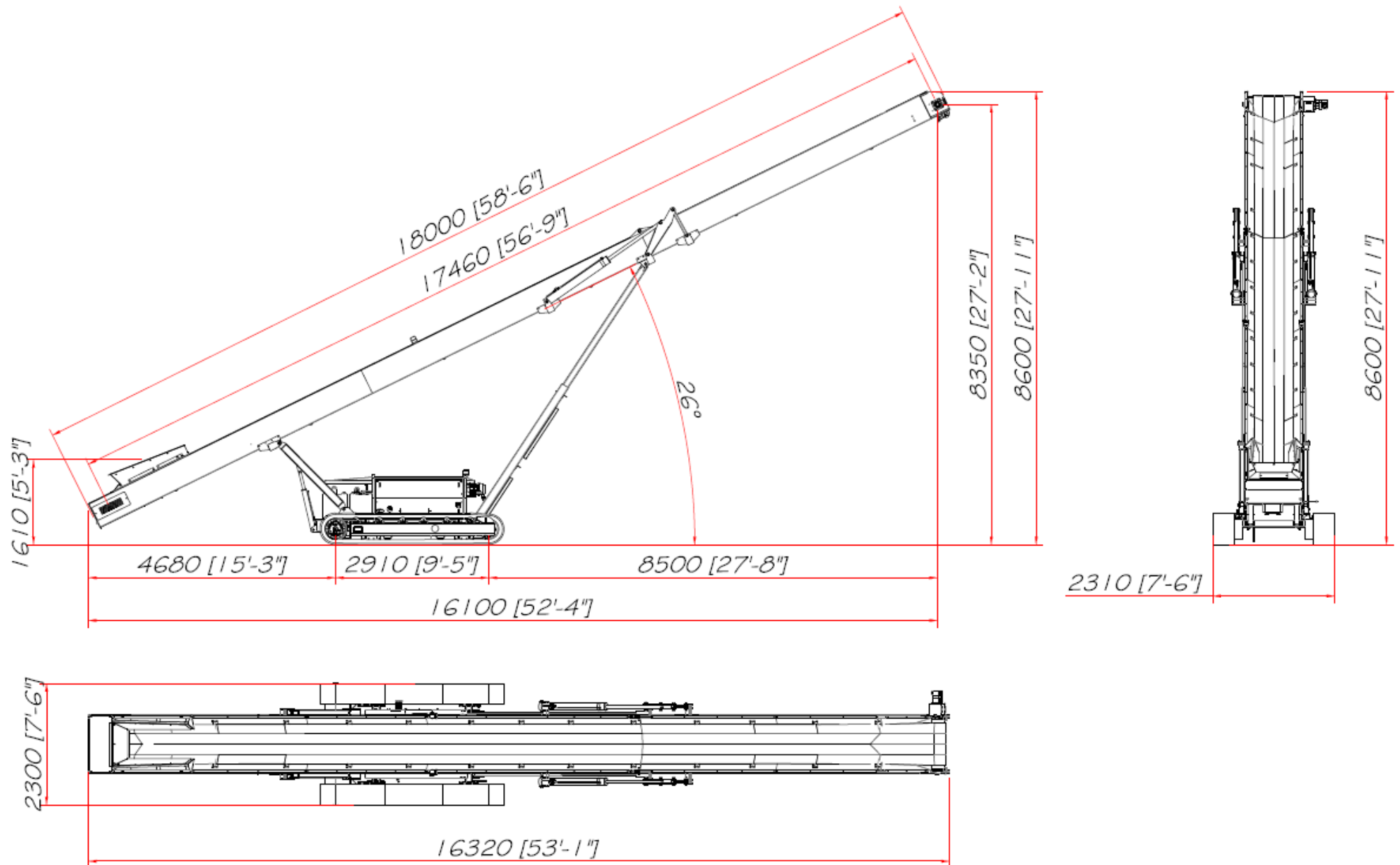
ORIGIN C2000T – GENERAL ARRANGEMENT

OPERATIONAL – 22 Degrees– FEEDBOOT RAISED



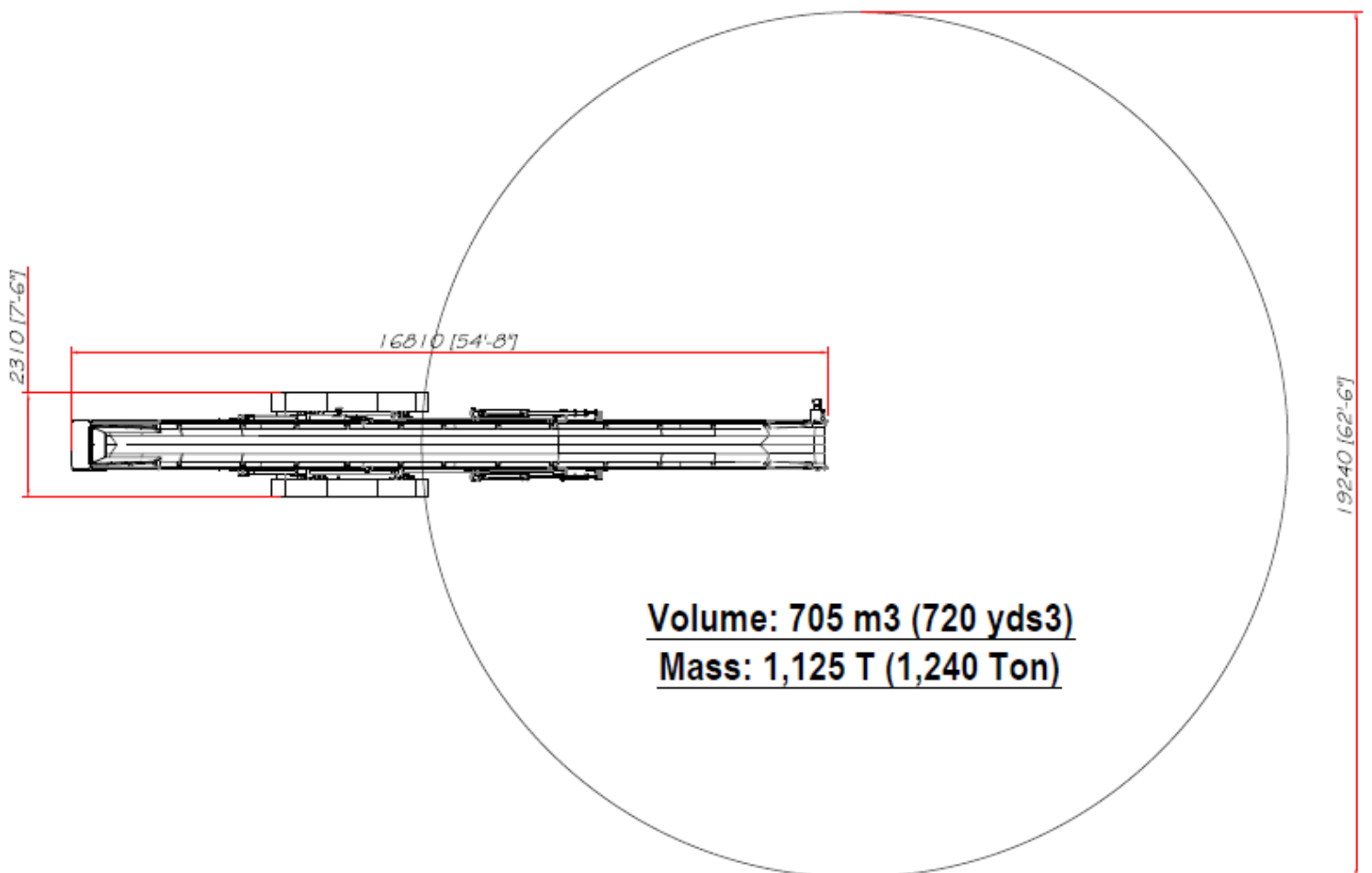
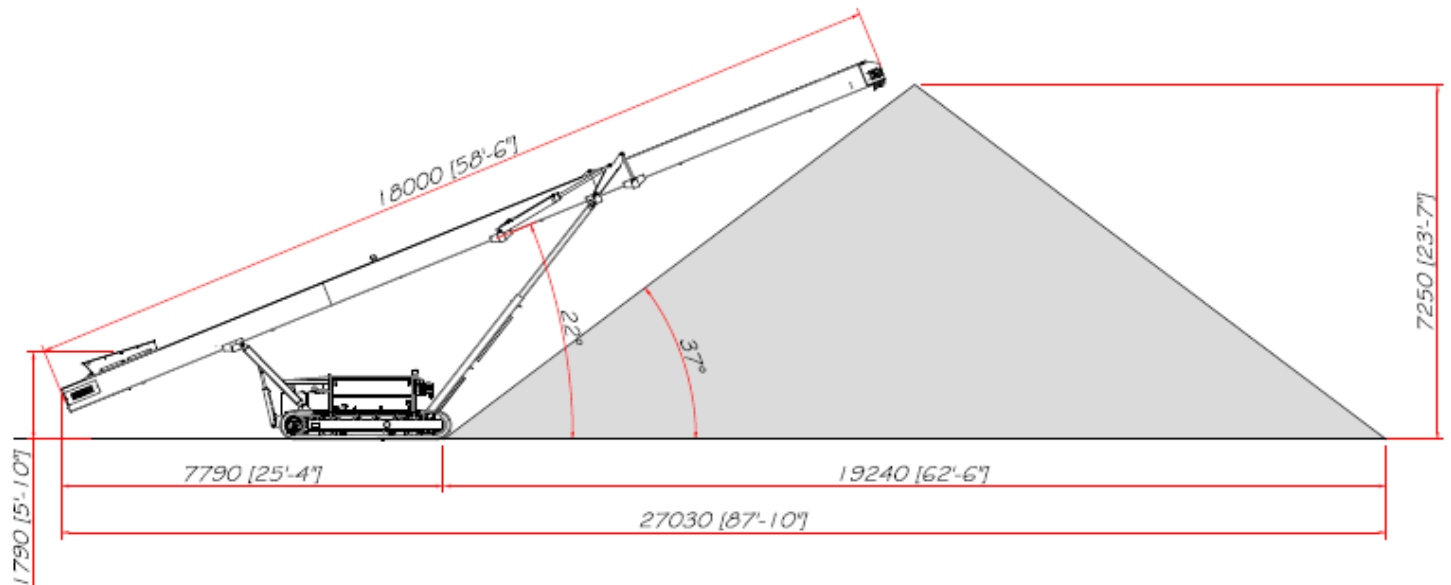
ORIGIN C2000T – GENERAL ARRANGEMENT

FULLY RAISED – 26 Degrees - FEEDBOOT RAISED



ORIGIN C2000T – GENERAL ARRANGEMENT

22 Degrees – Stockpiling



Telestack Limited
Bankmore Way East
Omagh, Co.Tyrone
Northern Ireland
BT79 0NZ

Tel: +44 (0) 2882 251100
Fax: +44 (0) 2882 252211
Web: www.telestack.com
Email: Sales@telestack.com



**THE
POWER
TO MOVE
MATERIALS**

The information in this document is for information only and is subject to change without notice. Telestack assumes no liability resulting from errors or omissions in this specification, or from the use of the information contained herein. Due to the continual product development we reserve the right to change specifications without notice. Any product dimensions and figures given out in this specification are for guidance purposes only. These results will vary depending on product, commodity and application. Some or all of the machines in these pictures may be fitted with optional extras. Telestack is a registered trademark.