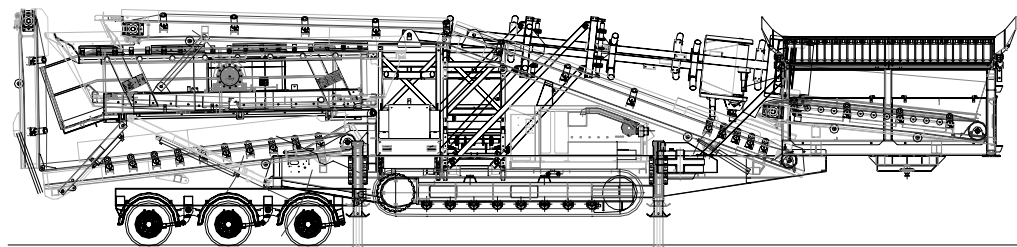
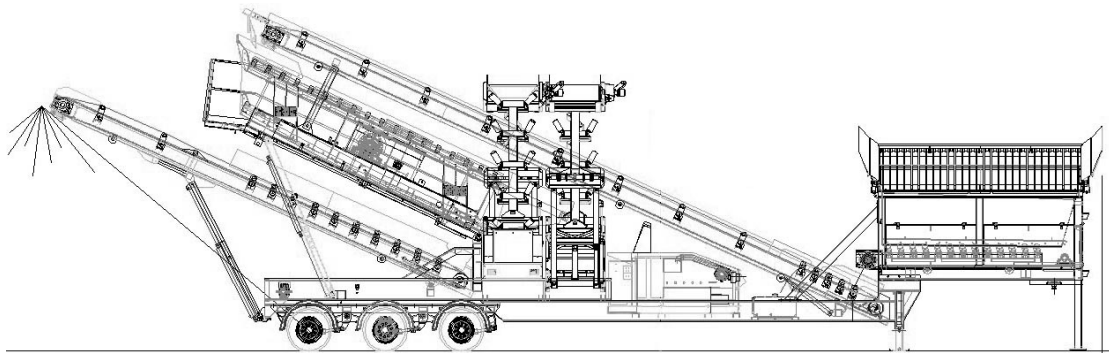
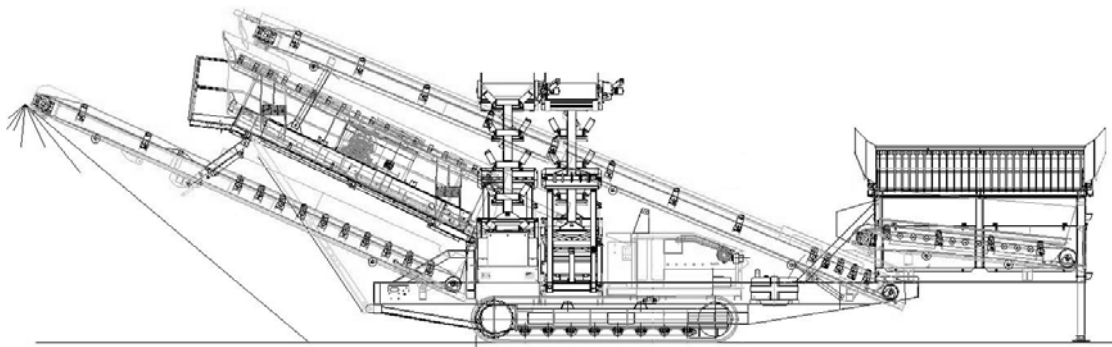




Powerscreen International. Dist. Ltd.
Coalisland Road, Dungannon,
Co.Tyrone, N.Ireland BT71 4DR
Tel: +44(0) 2887 740701
Fax: +44(0) 2887 746569
Email: mail@powerscreen.co.uk

INTRODUCING THE Turbo Chieftain 1800



All specifications subject to change without prior notice.



Turbo Chieftain 1800

Technical Specification



FEATURES

• Total weight	26,630kg (58,586 lbs)	W
• Total weight	32,580kg (71,676 lbs)	T
• Total weight	34,980kg (76,956 lbs)	Track c/w Bogie
• Vibrating grid fitted	29,340kg (64,548 lbs)	W
• Vibrating grid fitted	35,290kg (77,638 lbs)	T
• Width (transport)	2.75m (9')	W
• Width (transport)	2.90m (9.5')	T
• Length (transport)	16.82m	W
•	16.95m	T
• Height (transport)	4.00m	W
•	3.35m	T
• Vibrating grid fitted	3.55m	T
• Hopper capacity	8.0m ³	T
•	9.5m ³	W
• Screenunit	4 – bearing 4.88m x 1.55m (16' x 5')	
• Powerunit	Diesel Hydraulic with Deutz BF4M1012C – 82kW (109 Hp).	

ADVANTAGES

- High capacity -500 TPH, (depending on mesh sizes and material type).
- Quick set up time typically under 15 minutes.
- Maximum mobility with heavy duty, low ground pressure crawler tracks. **T**
- Optional tri-axle bogie system allows the track machine to be transported without the need for a low loader. **T**
- Approved GLD braking axles, spring suspension, mudguards and 235/65/R17.5 dual road wheels. **W**
- Removable heavy duty pendant remote control system. **T**
- Optional radio control system available if required at extra cost. **T**
- High performance hydraulic system – David Brown pumps, Danfoss motors, Oil cooler, Commercial Hydraulics control valves.
- Angle adjustable tipping grid with radio control double acting tipping grid rams.
- Low profile Single deck Vibrating Grid option with remote control tipping. Angle adjustable and fully riveted construction.

APPLICATIONS

- Sand and gravel
- Topsoil
- Coal
- Crushed stone
- Recycling

NB - W = WHEEL MACHINE / T = TRACK MACHINE



Turbo Chieftain 1800 Technical Specification

Chieftain 1800 Sept. 2000

Page 3

Hopper & Grid:

Adjustable angle tipping grid with integral loading and wing plates	
Grid opening	3.57m x 1.8m (11'-9" x 5'-11")
Grid aperture:	102mm (4")
Target area:	4.3 x 1.8m (14'-1" x 5'-11")
Hopper capacity:	8.0m ³ T
	9.5m ³ W

Screenunit:

16' x 5' (4.88 x 1.55m) double deck, 4 bearing, free floating vibration system which eliminates the need for fine tuning.

Feed Conveyor:

1200mm (48") wide direct feed conveyor with direct drive system & hydraulic variable speed control

Main Conveyor:

1050mm (42") wide hydraulically adjustable conveyor, fully skirted & sealed to prevent spillage.

Tail Conveyor:

1200mm (48") wide hydraulically folding tail conveyor
4.09m (13' - 9") stockpile height. (Measured to drum centre) **T**
4.35m (14' - 3") stockpile height. (Measured to drum centre) **W**

Side Conveyors:

800mm (32") wide hydraulically folding side conveyors with individual, variable speed control:
4.31m (14' - 1.5") stockpile height. (Measured to drum centre) **T**
4.55m (14' - 11") stockpile height. (Measured to drum centre) **W**

Powerunit & Hydraulics:

Diesel engine:	Deutz BF4M 1012C, with output up to 82 kW (109 Hp), developing 72 kW (96Hp) at 2200 rpm.
Flywheel pump1:	David Brown 4032/4032 (32cc/rev each circuit)
PTO pump1:	David Brown 5023/5023 (23cc/rev each circuit)
PTO pump2:	Ultra I PL072
Feeder Motor:	Danfoss OMSS250 (250cc/rev)
Main conveyor Motor:	Danfoss OMT500 (500cc/rev)
Tail Conveyor Motor:	Danfoss OMT500 (500cc/rev)
Side Conveyor Motor:	Danfoss OMT500 (500cc/rev)
Screen Motor:	David Brown MCC 2208 (59cc/rev)

NB - T = TRACK MACHINE / W = WHEEL MACHINE

UNLIMITED SOLUTIONS FOR LIMITED RESOURCES

All specifications subject to change without prior notice.



Turbo Chieftain 1800

Technical Specification



Chieftain 1800 Sept. 2000

Page 4

Tank Capacities:

Hydraulic tank: 564 L (124 Gal)
 Diesel tank: 336 L (74 Gal)

Crawler Track Data: T

Tractive Effort = 20,830 daN
 Gradability Percentage = 101 % (45deg)
 Gearbox Ratio = 1:153
 Hydraulic Motor = Rexroth 90 cc/rev
 Approximate Speed = 0.62 Km/hr

Road Transport: W

Wheels: 235/75/R17.5 Dual
 Axle: Approved braking axle (GLD manufacture)
 Suspension: Mono leaf spring suspension
 Brakes: Air brakes, (ABS optional)
 Mudguards: Plastic type
 Lateral Protection: Optional extra.
 Lights: Optional extra.

Vibrating Grid Option

Screen size: 3.05m x 2.14m (10' x 7').
 Working angle: 10° to 20° adjustable.
 Tip angle: 45° maximum.
 Motor: David Brown MCC 2208 (59cc/rev)
 Circuit: Coupled to main conveyor circuit.
 Transport height: 3.55m **T**
 Transport height: 4.0m **W**
 Transport height: 4.0m **Track Bogie**

NB - T = TRACK MACHINE / W = WHEEL MACHINE

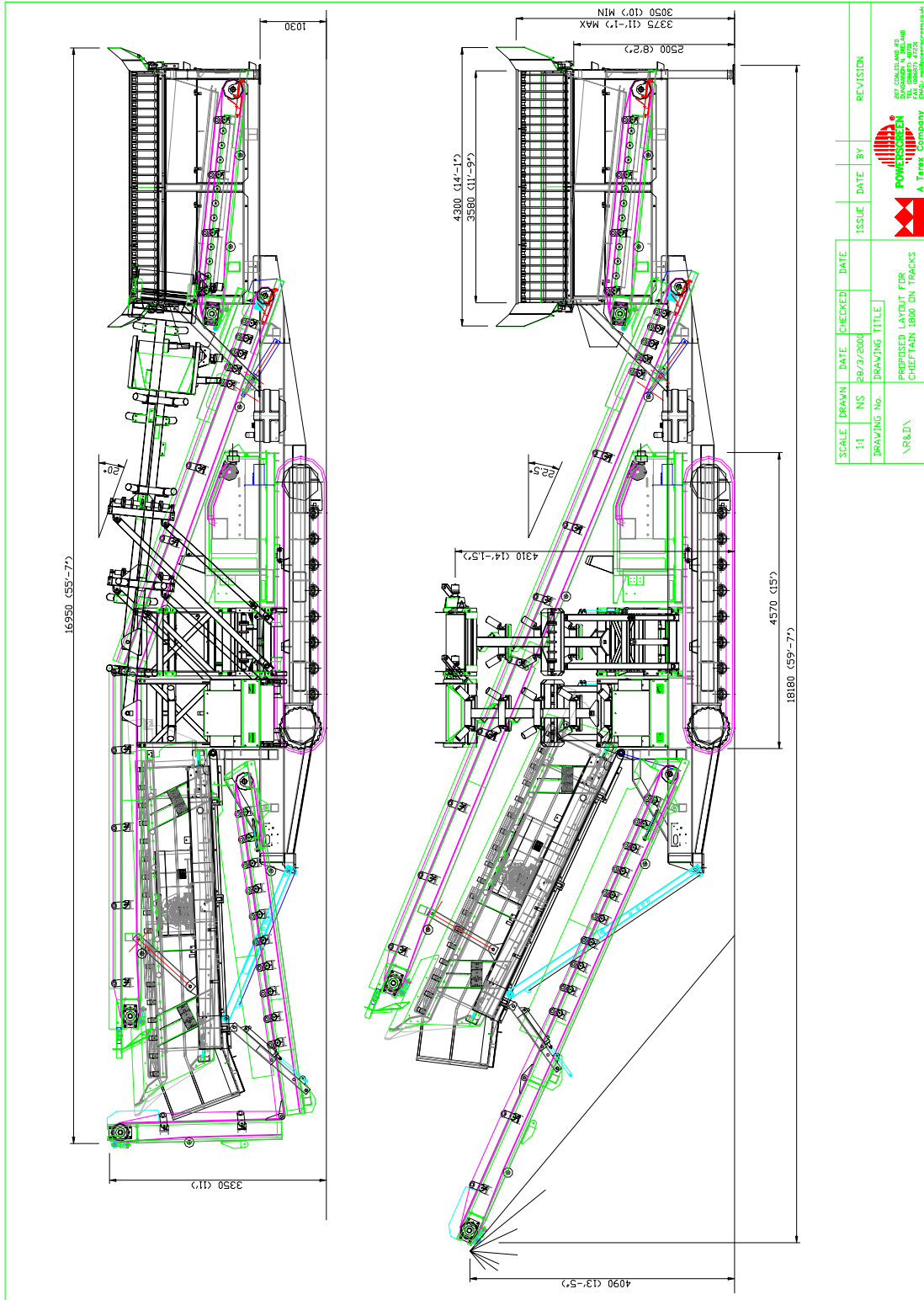


Turbo Chieftain 1800 Technical Specification



Chieftain 1800 Sept. 2000

Page 5



UNLIMITED SOLUTIONS FOR LIMITED RESOURCES

All specifications subject to change without prior notice.



Turbo Chieftain 1800 Technical Specification



Chieftain 1800 Sept. 2000

Page 7

UNLIMITED SOLUTIONS FOR LIMITED RESOURCES

All specifications subject to change without prior notice.

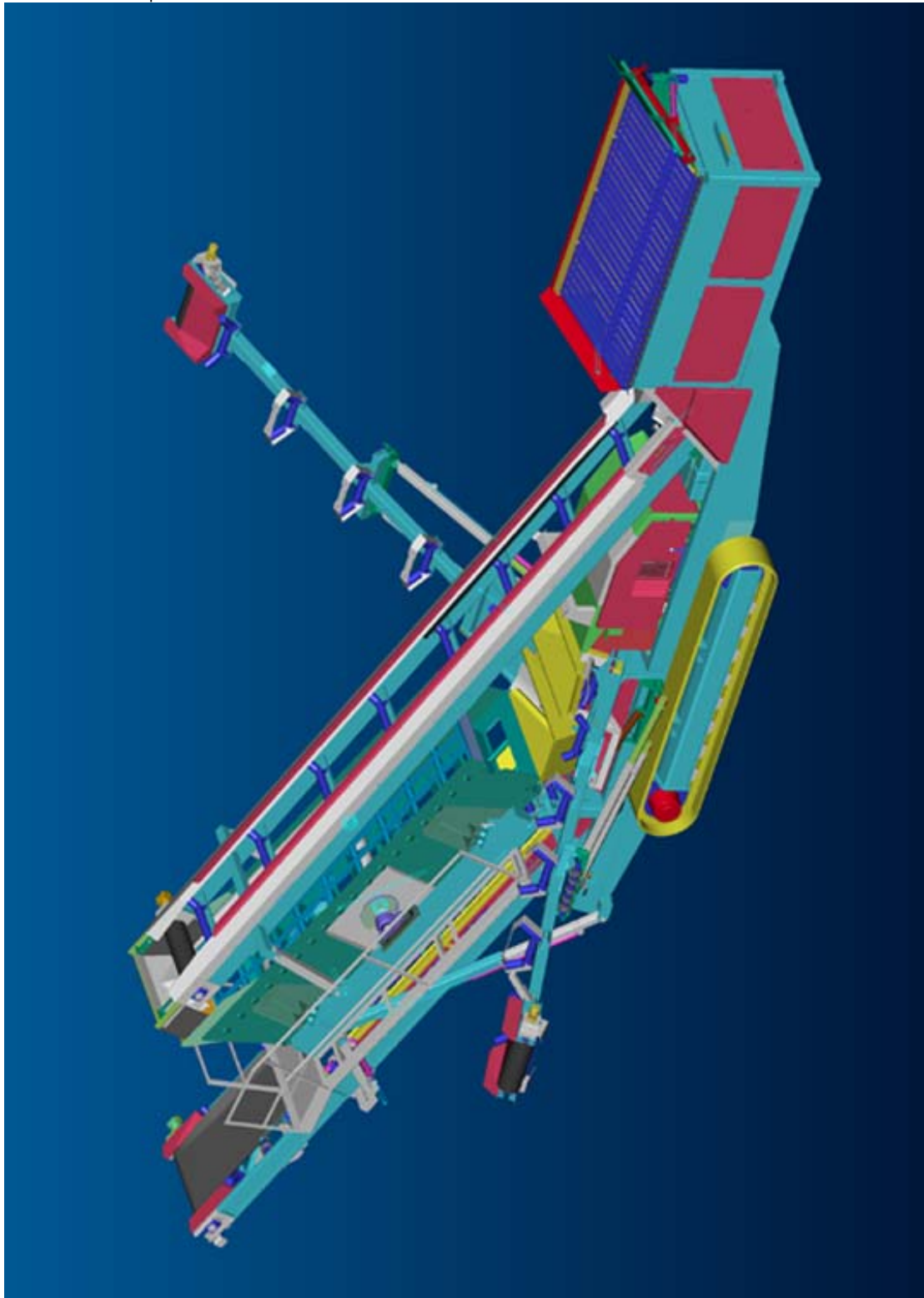


Turbo Chieftain 1800 Technical Specification



Chieftain 1800 Sept. 2000

Page 8



UNLIMITED SOLUTIONS FOR LIMITED RESOURCES

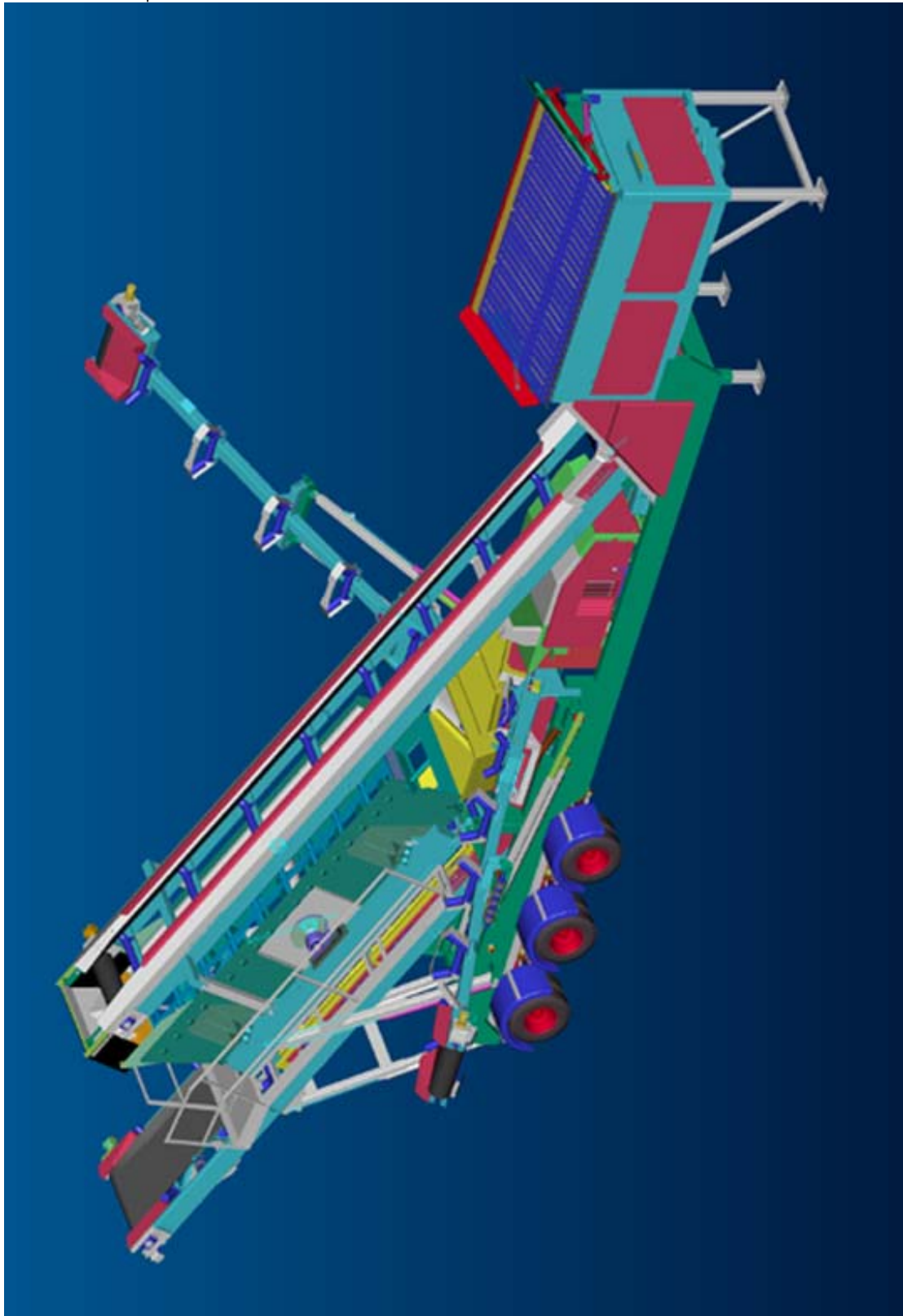
All specifications subject to change without prior notice.



Turbo Chieftain 1800 Technical Specification

Chieftain 1800 Sept. 2000

Page 9



UNLIMITED SOLUTIONS FOR LIMITED RESOURCES

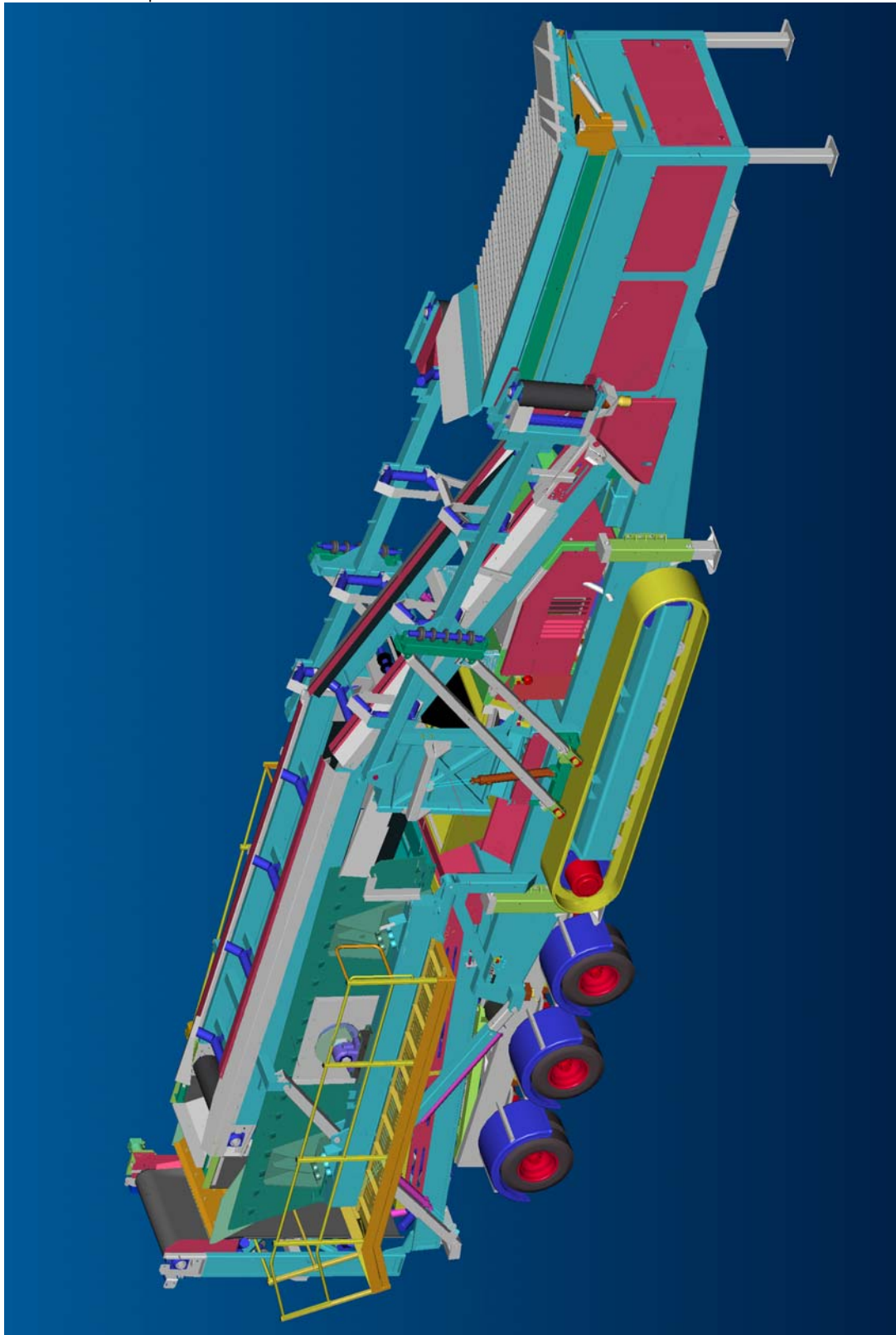
All specifications subject to change without prior notice.



Turbo Chieftain 1800 Technical Specification

Chieftain 1800 Sept. 2000

Page 10



UNLIMITED SOLUTIONS FOR LIMITED RESOURCES

All specifications subject to change without prior notice.

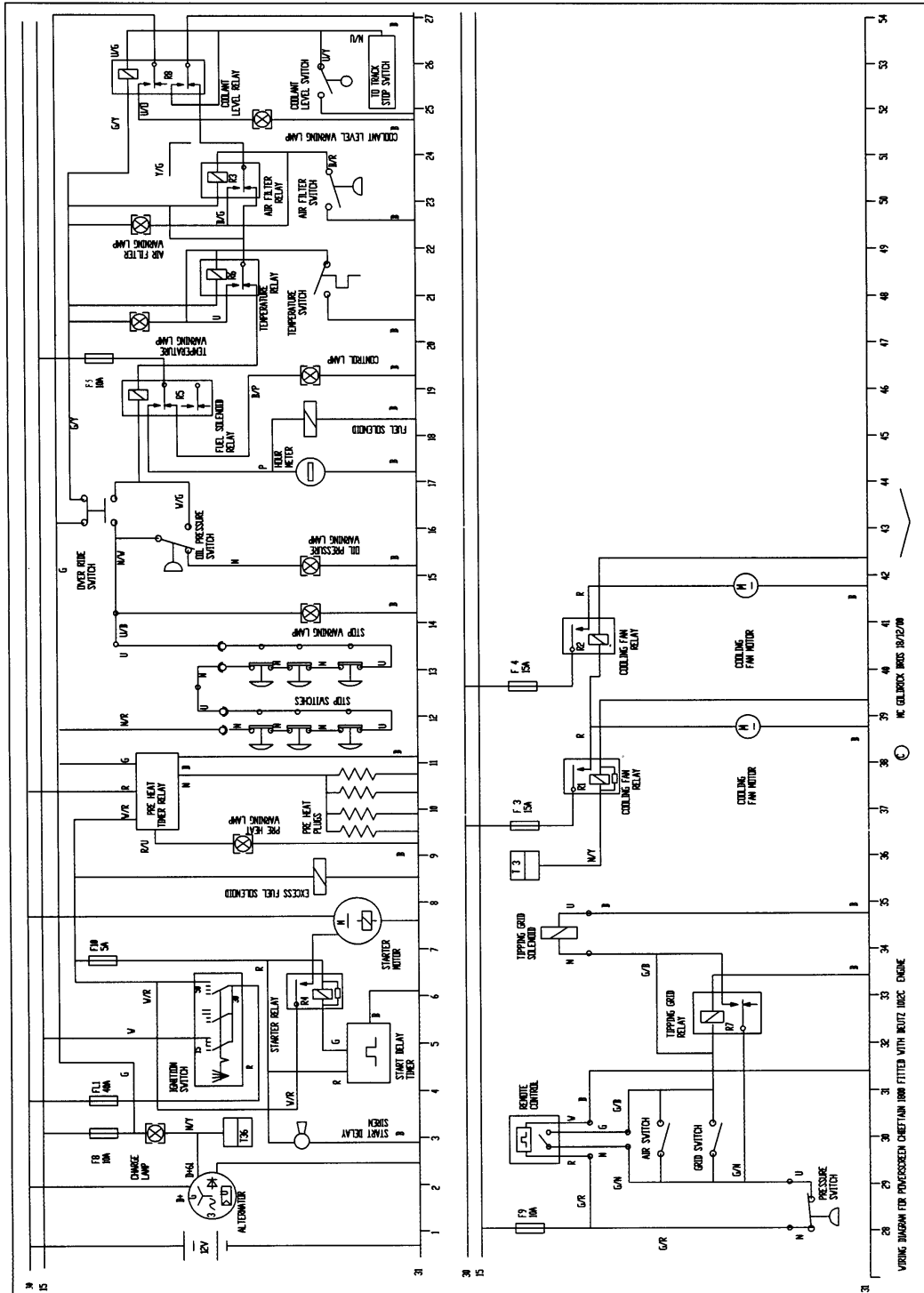


Turbo Chieftain 1800 Technical Specification



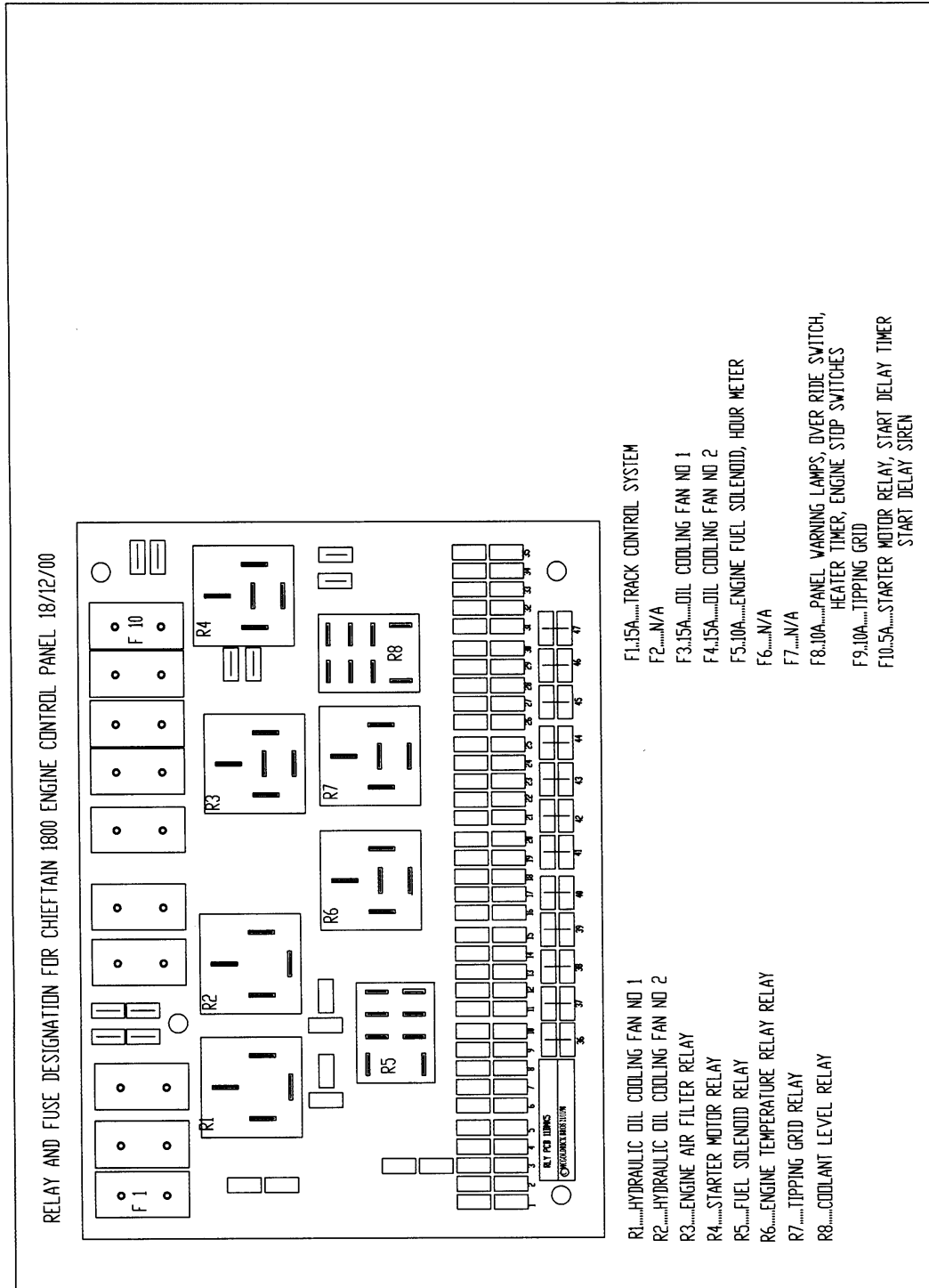
Chieftain 1800 Sept. 2000

Page 11



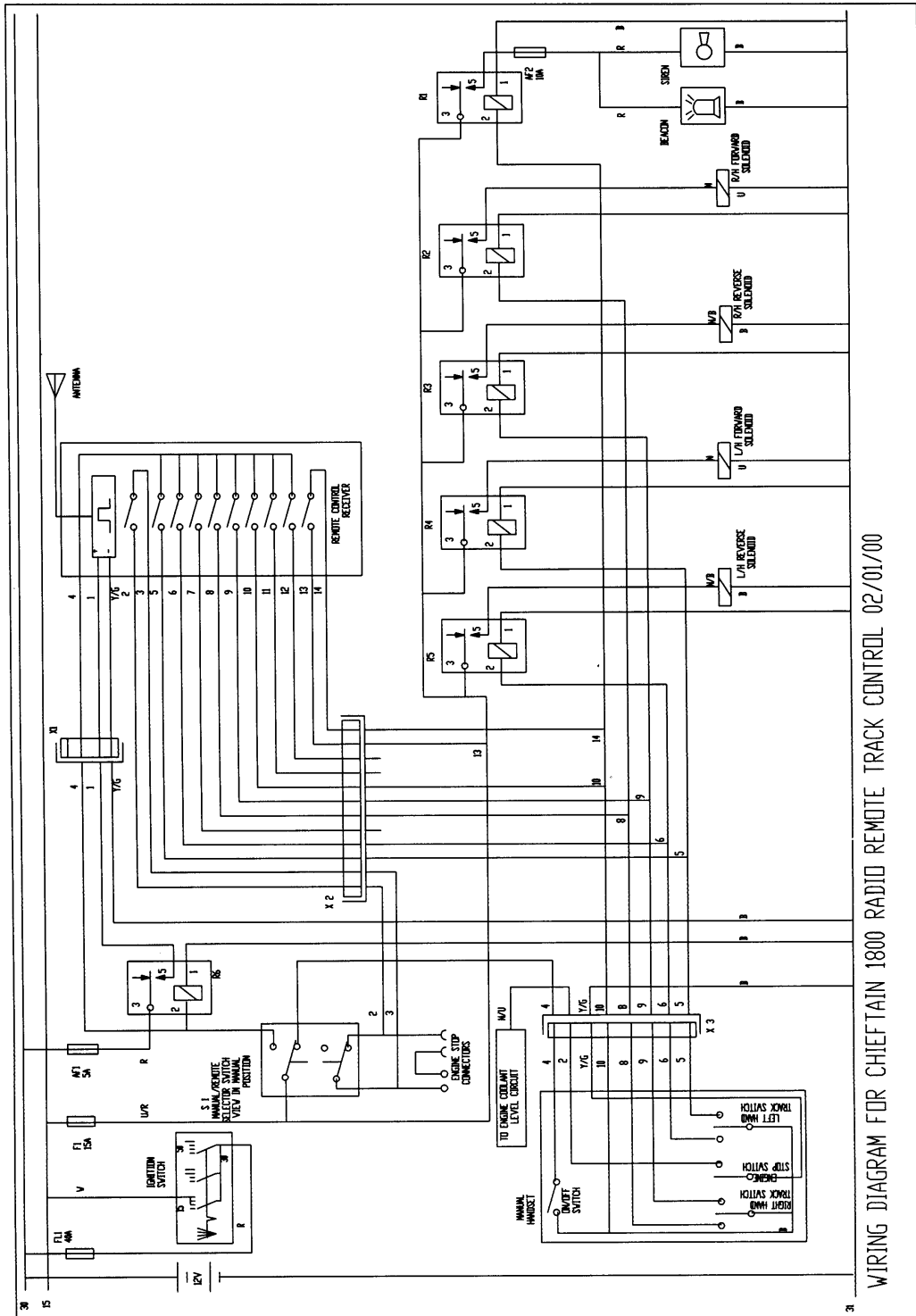


Turbo Chieftain 1800 Technical Specification





Turbo Chieftain 1800 Technical Specification



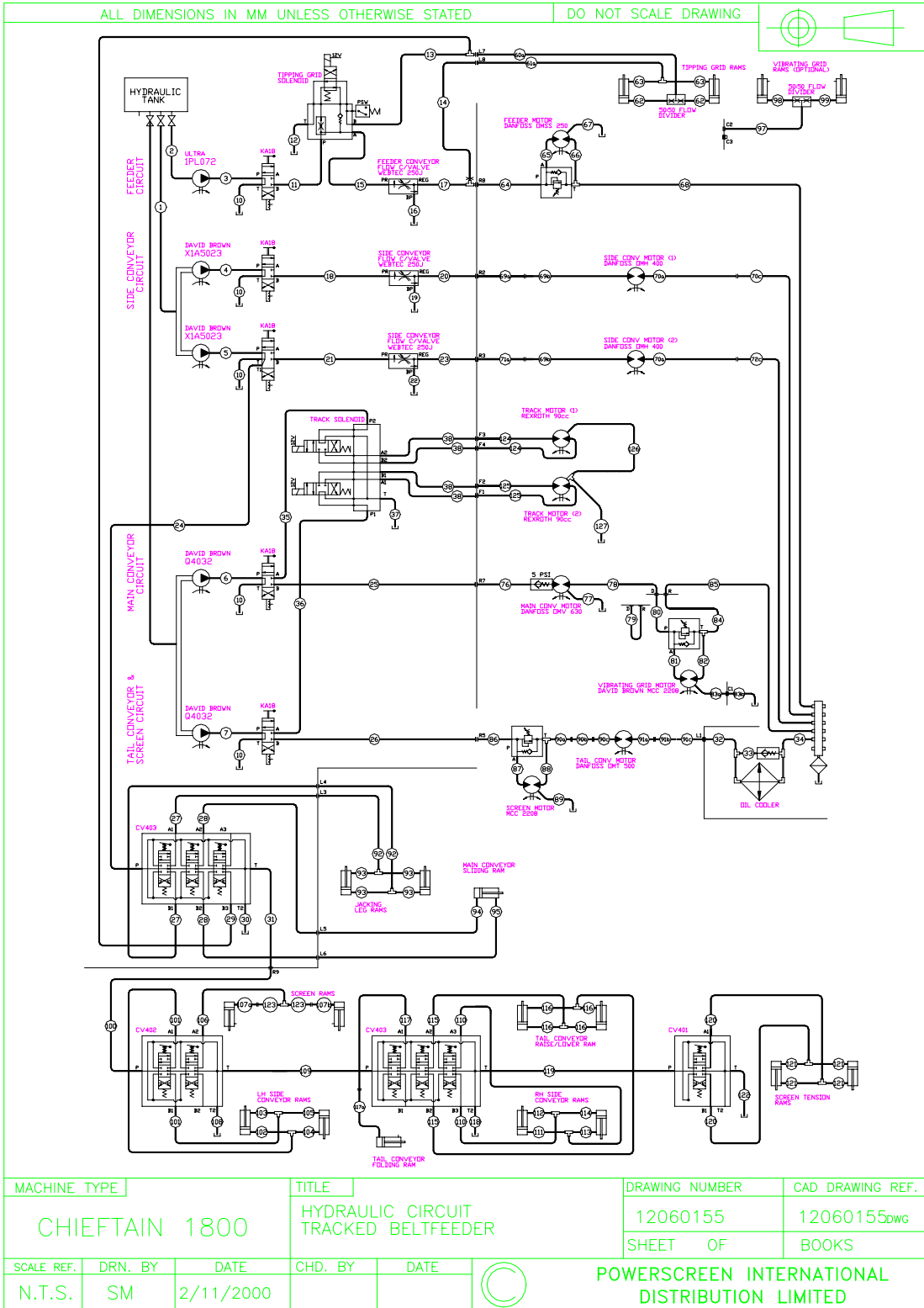


Turbo Chieftain 1800 Technical Specification



Chieftain 1800 Sept. 2000

Page 15



UNLIMITED SOLUTIONS FOR LIMITED RESOURCES

All specifications subject to change without prior notice.

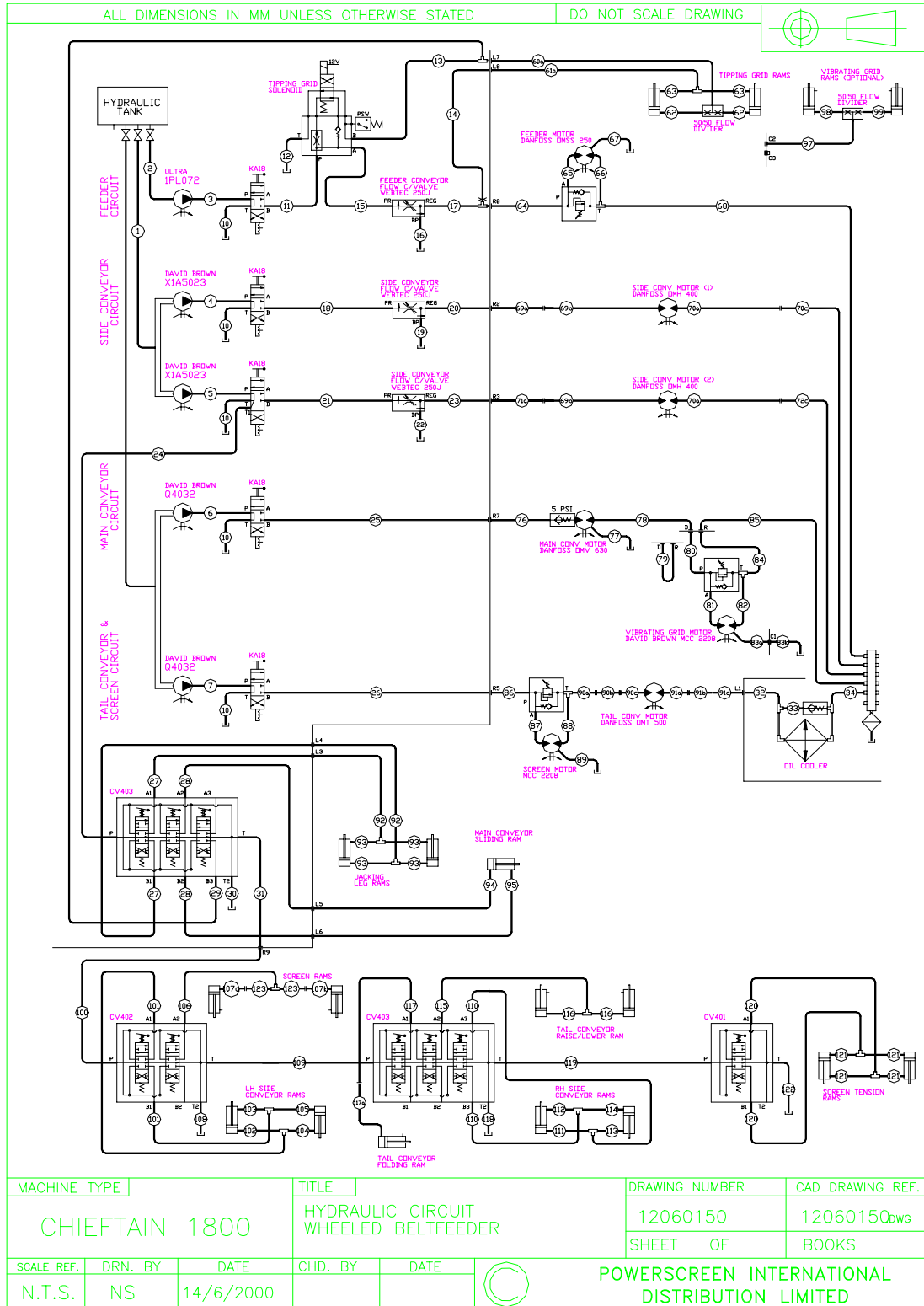


Turbo Chieftain 1800 Technical Specification



Chieftain 1800 Sept. 2000

Page 16



All specifications subject to change without prior notice.