

*Chieftain 1700*  
*Technical Specification*



**INTRODUCING THE  
CHIEFTAIN 1700  
2 DECK / 3 DECK DRY -  
3 DECK RINSER  
TECHNICAL SPECIFICATION**



***3 DECK DRY MODEL SHOWN***

All specifications subject to change without prior notice.

# **Chieftain 1700**

## **Technical Specification**

### **FEATURES**

#### **12ft Hopper Version**

- Total weight 29,400 kg (32.4 US ton)
- Width (transport) 3.0m (9' - 10")
- Length (transport) 15.97m (52' - 5")
- Height (transport) 3.4m (11' - 2")

#### **14ft Hopper Version**

- Width (transport) 3.0m (9'-10")
- Length (transport) 16.56m (54' - 4")
- Height (transport) 3.4m (11' - 2")

### **ADVANTAGES**

- High capacity -up to 500 TPH, (depending on mesh sizes and material type).
- Quick set up time typically under 15 minutes.
- Maximum mobility with heavy duty, low ground pressure crawler tracks.
- Removable heavy duty pendant remote control system.
- Optional radio control system available if required at extra cost.
- High performance hydraulic system – Cast iron pumps and motors c/w hydraulic oil cooler.
- Angle adjustable tipping grid with radio control double acting tipping grid rams.
- Low profile Single or Double deck Vibrating Grid option with remote control tipping. Angle adjustable and fully riveted construction.

### **APPLICATIONS**

- Sand and gravel
- Topsoil
- Coal
- Crushed stone
- Recycling
- Iron Ore

# Chieftain 1700

## Technical Specification

### Hopper & Grid:



Adjustable angle tipping grid with integral loading and wing plates	
Grid opening	3.57m x 1.8 m (11'-9" x 5'-11") 12Ft 4.18m x 1.8 m (13'-9" x 5'-11") 14Ft
Grid aperture:	102mm (4")
Target area:	4.3 x 1.8m (14'-1" x 5'-11") 12 Ft 4.9 x 1.8m (16'-1" x 5'-11") 14 Ft
Hopper capacity:	7.0m <sup>3</sup> (9.15cu.yds) T 12Ft Hopper
Hopper capacity:	8.15m <sup>3</sup> (10.65cu.yds) T 14Ft Hopper

### Screenunit:



- 2 bearing system , Grease lubricated , Pulley & triple belt drive
- 3 Deck Screenbox** configuration :-  
4.8 x 1.5m (16' x 5') Top and Middle decks , 4.3 x 1.5m (14' x 5') Btm deck
- 2 Deck Screenbox** configuration :-  
4.8 x 1.5m (16' x 5') Top deck , 4.3 x 1.5m (14' x 5') Btm deck

All specifications subject to change without prior notice.

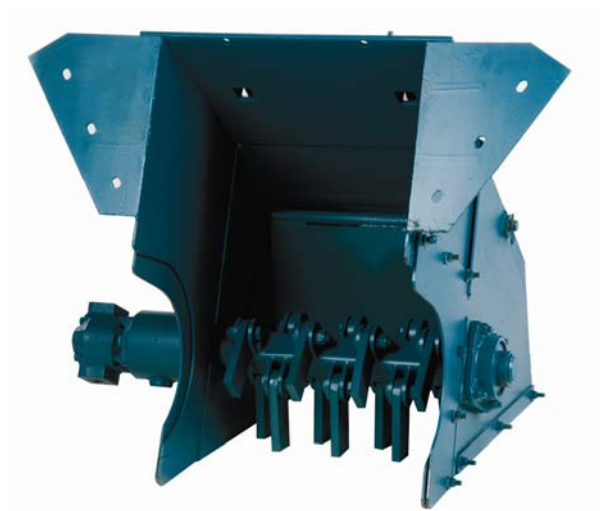
# **Chieftain 1700**

## **Technical Specification**

### **Feed Conveyor:**

1050mm (42") wide direct feed conveyor with direct drive system & hydraulic variable speed control.

### **Shredder:**



Optional, single shaft, flail type shredder designed for use in top soil applications.

### **Main Conveyor:**



1050mm (42") wide hydraulically adjustable conveyor, fully skirted & sealed to prevent spillage.

# *Chieftain 1700*

## *Technical Specification*

### *Tail Conveyor:*



- 1200mm (48") wide hydraulically folding tail conveyor
- 4.2m (13' – 9") stockpile height. (Measured to drum centre)

### *3 Deck Auxiliary Conveyor:*



- 650mm (26") stockpile 4.0m (13' - 1")
- Hydraulic folding Patent Pending

All specifications subject to change without prior notice.

# Chieftain 1700

## Technical Specification

### Side Conveyors:



- 650mm (26") wide hydraulically folding side conveyors with individual, variable speed control:
- 4.7m (15' – 5") stockpile height. (Measured to drum centre)

### Powerunit & Hydraulics:



Diesel Hydraulic :- Standard Diesel engine: developing 83kW (111.3Hp) @ 2200rpm  
Optional Diesel engine (1): developing 75kW (100Hp) @ 2200rpm  
Optional Diesel engine (2): developing 125kW (168Hp) @ 2200rpm  
Flywheel pump 1:-  
**3 Deck:** 33, 33, 27 cc/rev triple  
**2 Deck:** 33 , 33  
PTO A pump : 23 , 23 cc/rev tandem  
PTO B pump : 11 cc/rev  
Screen motor : 59cc/rev  
Feeder Motor : 160 cc/rev  
Main conveyor motor : 630cc/rev  
Tail conveyor motor : 500cc/rev  
Side conveyor : 400cc/rev  
Auxillary Conveyor : 400cc/rev

# **Chieftain 1700**

## **Technical Specification**

### **Crawler Track Data:**



Tractive Effort	=	14604.48 daN
Gradability Percentage	=	38.14%
Gearbox Ratio	=	1:122
Hydraulic Motor	=	63 cc/rev
Approximate Speed	=	1.02 Km/hr (1.02 Mph)

### **Vibrating Grid Option**



Screen size:	3.05m x 2.14m (10' x 7').
For Double deck	
Bottom deck screen size:	2 off 1.9 x 1.5m (6'3" x 4'11")
Working angle:	10°degrees to 20°degrees adjustable.
Tip angle:	45°degrees maximum.
Motor:	59cc/rev
Circuit:	Coupled to main conveyor circuit.
Transport height:	3.58m (11' - 9")
Total weight:	4000kg (4.41 US tons)

All specifications subject to change without prior notice.

# ***Chieftain 1700***

## ***Technical Specification***

### ***3 Deck Rinser Option***

Washbox on main conveyor  
6 Spraybars per deck  
Single or double catchbox with adjustable division plates  
Hydraulic opening catchbox to assist bottom deck mesh change

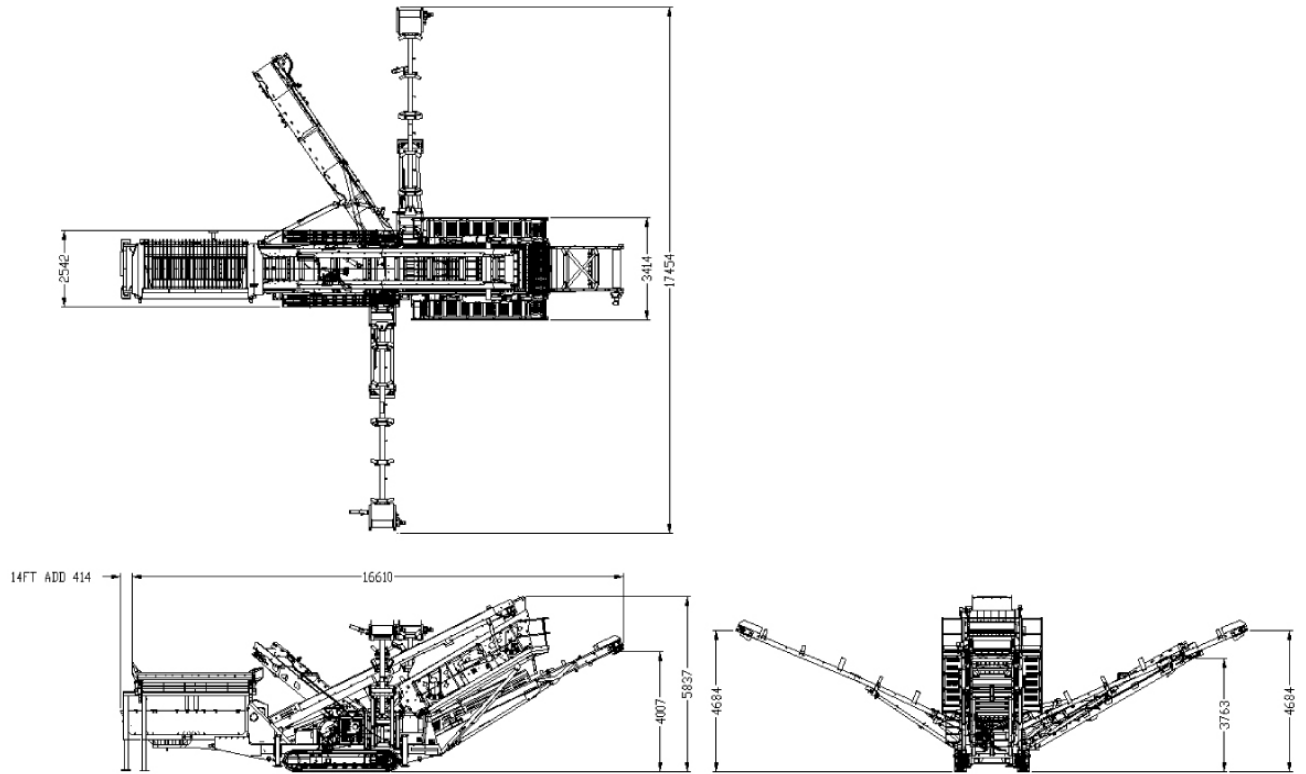
### ***Tank Capacities:***

Hydraulic tank:	576 L (153 US Gal)
Diesel tank:	336 L (89 US Gal)

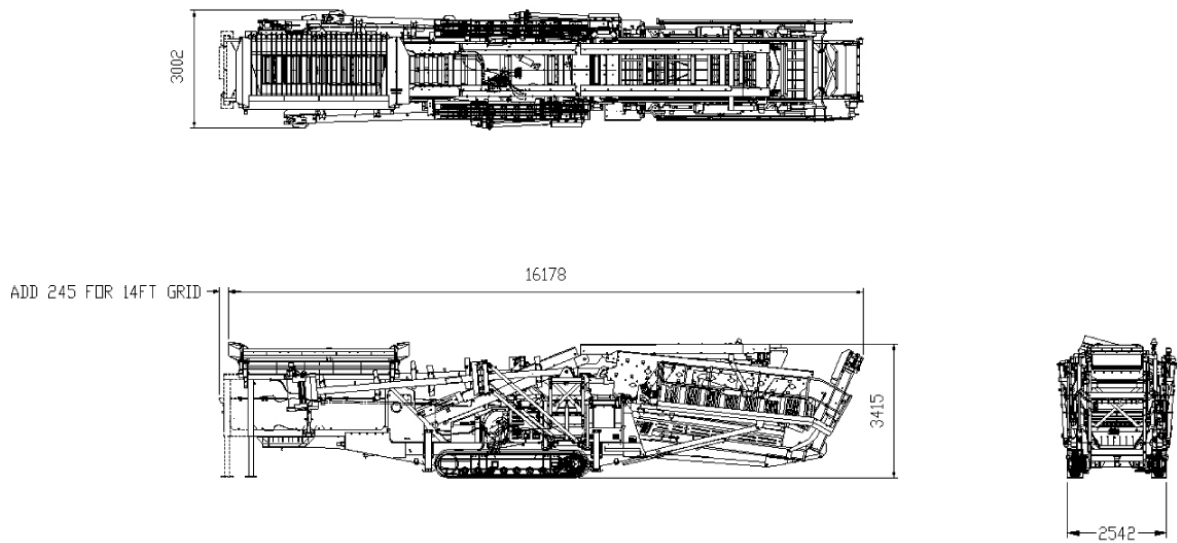
### ***Options***

Hydraulic screen tensioning  
12ft or 14ft hopper  
Single or Double deck vibrating grizzly  
Shredder  
4<sup>th</sup> Recirculation conveyor attached for transport  
Radio control tracking  
Wheel bogie for track machine  
Hydraulic jacking legs  
Rinser

# Chieftain 1700 Technical Specification



## CHIEFTAIN 1700 – 3 DECK DRY WORKING DIMENSIONS

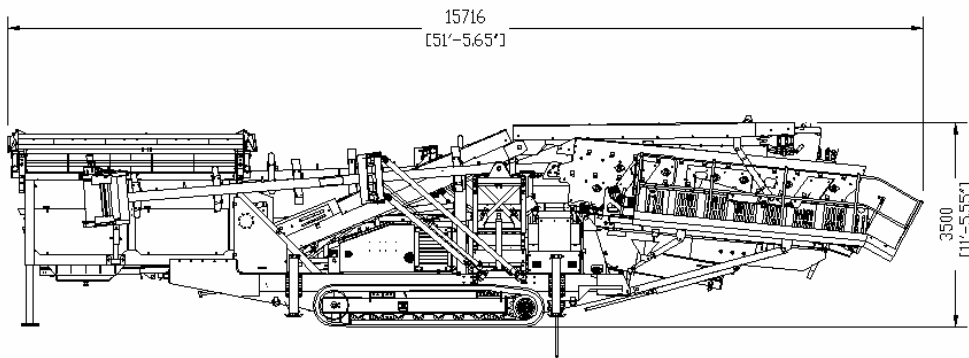
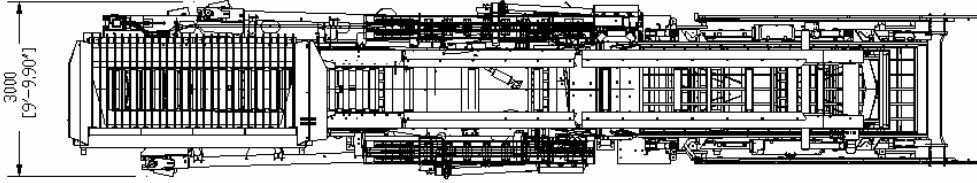


## CHIEFTAIN 1700 – 3 DECK DRY TRANSPORT DIMENSIONS

All specifications subject to change without prior notice.

# Chieftain 1700

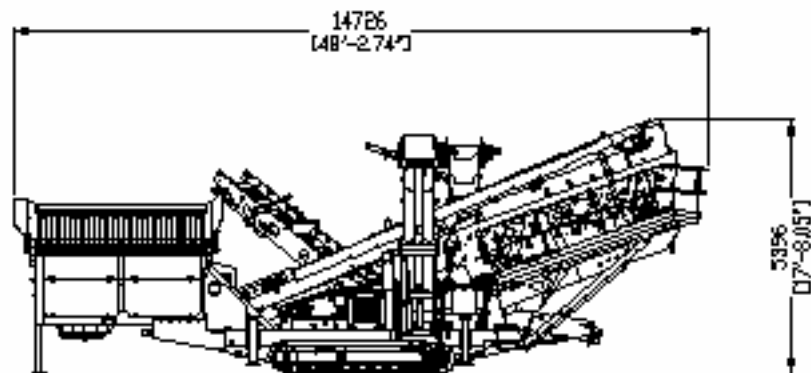
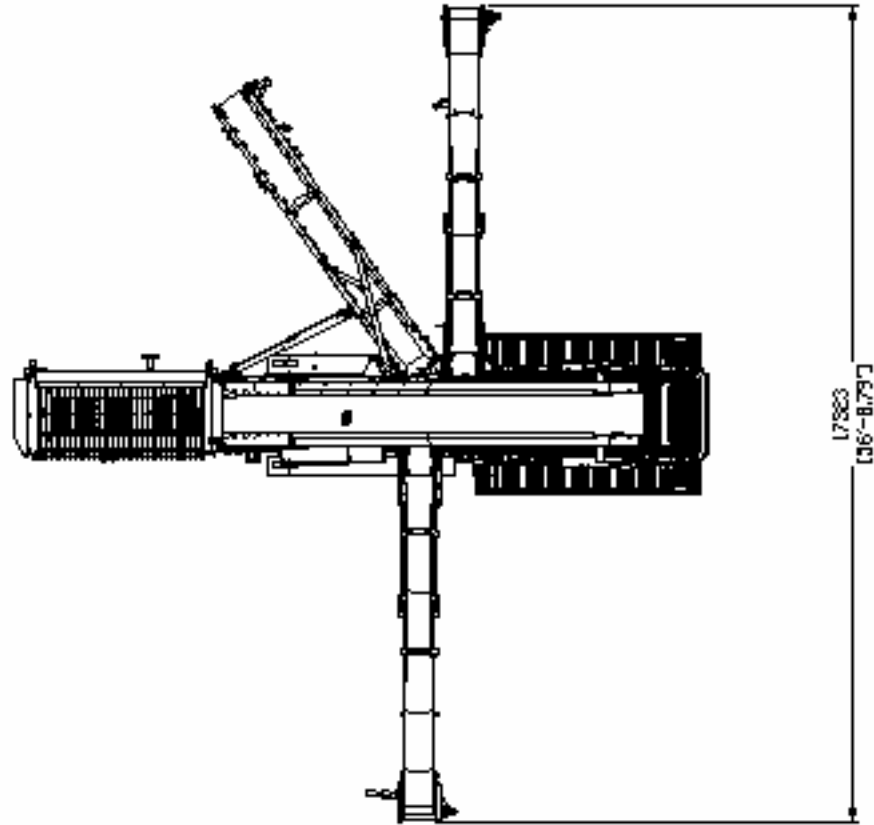
## Technical Specification



CHIEFTAIN 1700 3 DECK RINSER 12FT FEEDER

### CHIEFTAIN 1700 – 3 DECK RINSER 12FT FEEDER - TRANSPORT DIMENSIONS

# Chieftain 1700 Technical Specification



## CHIEFTAIN 1700 – 3 DECK RINSER WORKING DIMENSIONS

All specifications subject to change without prior notice.

# ***Chieftain 1700***

## ***Technical Specification***

The material in this document is for information only and is subject to change without notice. Powerscreen International Distribution Ltd. Assumes no liability resulting from errors or omissions in this document or from the use of the information contained herein. Due to continual product development we reserve the right to change specifications without notice. Photographs are for illustrative purposes only. Some or all of the machines in the illustrations may be fitted with optional extras. Please check with your Dealer for details on optional extras.

Powerscreen of California  
10 Case Court  
American Canyon, CA 94503

USA

Tel: (707) 253-1874  
Fax: (707) 253-1874  
Email: [sales@powerscreen-norcal.com](mailto:sales@powerscreen-norcal.com)  
Web: [www.powerscreen-norcal.com](http://www.powerscreen-norcal.com)